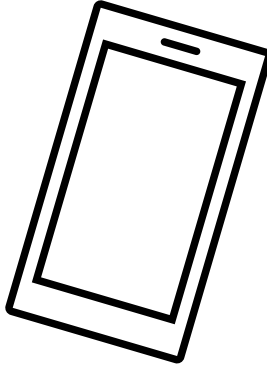


# Researchers at **Georgia State University & Shepherd Center** want to prevent falls in people with Multiple Sclerosis!



**Two visits lasting up to 2 hours each will take place at GSU or Shepherd Center.**

**You will be asked to:**

- Stand and balance
- Walk
- Perform thinking tasks
- Answer questions about your health
- Use a mobile health application that measures your fall risk
- You may be asked to track your falls for 6 months

**You may qualify if you are:** 1) 55 years or older; 2) Are able to stand unassisted for at least 30 seconds

You may receive up to \$100

Interested in participating? Please contact:

Erica Sutton at [Erica.Sutton@shepherd.org](mailto:Erica.Sutton@shepherd.org) or 404-367-1305 or

Dr. Katherine Hsieh at [movement@gsu.edu](mailto:movement@gsu.edu) or 404-413-1221